



inovonics®

Product Catalog: Europe

Table of Contents

Market Solutions

- 1 Commercial Security
- 2 Commercial Monitoring

Transmitters

- 3 Pendant
- 4 Universal
- 5 Commercial Monitoring
- 6 Specialized
- 7 Motion Detector

Receivers

- 8 Serial
- 9 Add-On

Repeaters

- 10 Repeaters

Other Infrastructure

- 11 System Tools

Appendix

- 12 Product Index
- 13 Accessory Index
- 14 Replacement Battery Index

Commercial Security

Transmitters

Pendant

Part Number	Description
EE1223D	Double-button, water-resistant pendant transmitter
EE1223S	Single-button, water-resistant pendant transmitter
EE1233D	Double-button, pendant transmitter
EE1233S	Single-button, pendant transmitter
EE1235D	Double-button, belt clip pendant transmitter
EE1235S	Single-button, belt clip pendant transmitter
EE1236D	Double-button, three condition pendant transmitter
EE1235S	Single-button, belt clip pendant transmitter

Universal

Part Number	Description
EE1215	Single input universal transmitter with wall tamper
EE1215W	Single input universal transmitter with reed switch
EE1216	Dual input universal transmitter with wall tamper

Specialized

Part Number	Description
EE1247	Glassbreak detector transmitter

Motion Detector

Part Number	Description
EE1261	Four element motion detector
EE1265	360° Ceiling mount motion detector

Receivers

Serial

Part Number	Description
EE4200-HSG	Security only serial receiver

Add-On

Part Number	Description
EE4216MR	16 zone multi-condition receiver with 6 relay outputs
EE4232M	32 zone multi-condition receiver with 12 open collector outputs
EE4232MR	32 zone multi-condition receiver with 12 relay outputs

Repeaters

Repeater

Part Number	Description
EE5000	High power repeater

Commercial Monitoring

Transmitters

Commercial Monitoring

Part Number	Description
EE1722	Temperature/humidity transmitter
EE1723	Dual input temperature transmitter

Receivers

Serial

Part Number	Description
EE4000	Universal serial receiver

Other Infrastructure

System Tools

Part Number	Description
EE1210SK	Universal survey transmitter
EE7016	Wireless survey kit



EE1223D Double-button, water-resistant pendant transmitter

- Double-button design provides protection against accidental activation
- Lightweight, rugged design
- Necklace and belt clip included



EE1223S Single-button, water-resistant pendant transmitter

- Simple, single-button activation
- Lightweight, rugged design
- Necklace and belt clip included



EE1233D Double-button, pendant transmitter

- Double-button design provides protection against accidental activation
- Necklace included
- Easily mounted for fixed position signaling



EE1233S Single-button, pendant transmitter

- Simple, single-button activation
- Necklace included
- Easily mounted for fixed position signaling



EE1235D Double-button, belt clip pendant transmitter

- Double-button design provides protection against accidental activation
- Belt clip included



EE1235S Single-button, belt clip pendant transmitter

- Simple, single-button activation
- Belt clip included



EE1236D Double-button, three condition pendant transmitter

- Activates three different alarm conditions
- Belt clip included
- Easily mounted for fixed position signaling



EE1215 Single Input Universal transmitter with wall tamper

- Screw closure housing and wall tamper switch provide additional security
- For use with any standard NO/NC contact or sensor
- Includes both case and back tamper protection



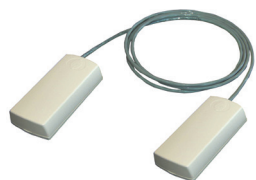
EE1215W Door/window transmitter with wall tamper and reed switch

- Built-in magnetic reed switch that supports up to a 0.6" gap
- Screw closure housing and wall tamper switch provide additional security
- For use with any standard NO/NC contact or sensor
- Includes both case and back tamper protection



EE1216 Dual input universal transmitter with wall tamper

- Supports dual inputs
- Screw closure housing and wall tamper switch provide additional security
- For use with any standard NO/NC contact or sensor
- Includes both case and back tamper protection



EE1722 Temperature/humidity transmitter - *Commercial monitoring use only*

- Transmits temperature/humidity periodically and on significant change
- Measurement range: -40° to 140°F and 0 to 100% relative humidity
- Typical accuracy of 0.5°F and 2.0% relative humidity
- The EN1722 requires use of the ACC710
- Available as EN1721 with integrated sensor (-4° to 140°F and 0 to 90% rH)



EE1723 Dual input temperature transmitter - *Commercial monitoring use only*

- Transmits temperature measurement periodically and on significant change
- Transmission intervals from 10 seconds to 30 minutes
- Sensor measurement range: Internal: -13° to 140°F, External: -22° to 212°F
- Typical accuracy of 0.8°F at room temperature



EE1247 Glassbreak detector transmitter

- Interlogix's ShatterPro II pattern recognition technology provides extended range (25 ft. radius, 360° coverage)



EE1941 Dual input one-way RF module *

- Powered by input device - low current draw
- Easy to integrate to any binary switch device
- Small form factor



EE1941XS Serial data one-way RF module *

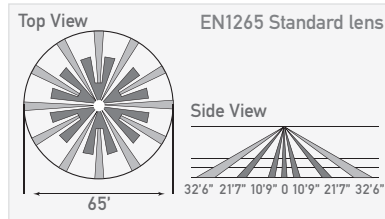
- Powered by input device - low current draw
- Easy to integrate to any serial output device
- 50 byte serial data payload

* Requires use of a serial receiver or network coordinator and application designed to support advanced functionality.



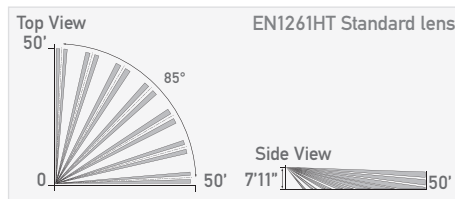
EE1265 360° Ceiling mount motion detector

- Wireless four element passive infrared intrusion detector for use in ceiling mount applications
- Provides wide coverage patterns even at low mounting heights
- Increased immunity to radio frequency interference, vibration, static, lightning, ambient temperature changes, or other causes of false activation
- Intelligent sleep timer extends battery life in high traffic



EE1261 Four element motion detector

- Increased immunity to radio frequency interference, vibration, static, lightning, ambient temperature changes, or other causes of false activation
- Case tamper and back tamper switches
- Pet immunity (up to 33lbs/1ft)
- Four year battery life in high traffic applications (200 activations a day)





EE4000 Universal serial receiver

- Wireless gateway between EchoStream one-way transmitters (security, submetering, temperature, or analog) and a head end application using an RS-232 serial interface
- Serial receiver transmits EchoStream formatted messages to the head end application
- Supervised connection between the receiver and application
- Serial integration enables hundreds to thousands of wireless devices



EE4200-HSG Security only receiver

- Wireless gateway between EchoStream one-way transmitters and a head end application using an RS-232 serial interface
- Serial receiver transmits EchoStream formatted messages to the head end application
- Supervised connection between the receiver and application
- Serial integration enables hundreds to thousands of wireless devices



EE4232M 32 zone stand alone receiver

- Add up to 32 high performance wireless transmitters to any installation
- Display shows condition of each transmitter, provides log of past 50 events, and shows signal strength
- 12 open collector outputs
- Momentary output duration programmable from 0.5 to 99.5 seconds
- Includes case tamper protection, jam detection, and internal antennas for a secure wireless implementation
- Wireless programming routine built into the receiver
- EN50131 Security Grade; EN50130 Environmental class II compliance



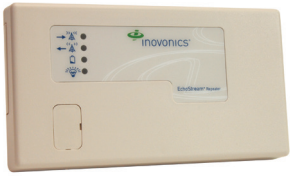
EE4216MR 16 zone stand alone receiver with relay outputs

- Add up to 16 high performance wireless transmitters to any installation
- Two line text display shows condition of each transmitter, provides log of past events, and shows signal strength
- 6 form C relays for connecting to any panel
- Momentary output duration programmable from 0.5 to 99.5 seconds
- Includes case tamper protection, jam detection, and internal antennas for a secure wireless implementation
- Wireless programming routine built into the receiver
- EN50131 Security Grade 2; EN50130 Environmental class II compliance



EE4232MR 32 zone multi-condition receiver, relay outputs

- Add up to 32 high performance wireless transmitters to any installation
- Includes support for both single and multiple condition transmitters
- Display shows condition of each transmitter, provides log of past 50 events, and shows signal strength
- 12 form C relay outputs
- Outputs can be configured in follower, latching, momentary, or toggle modes independently
- Momentary output duration programmable from 0.5 to 99.5 seconds
- Includes case tamper protection, jam detection, and internal antennas for a secure wireless implementation
- Wireless programming routine built into the receiver
- EN50131 Security Grade 2; EN50130 Environmental class II compliance



EE5000 High power repeater

- Includes lithium-ion backup battery
- Simple registration setup
- Self configuring
- Case and wall tamper protection
- EN50131 Security Grade 2; EN50130 Environmental class II compliance



EE1210SK Universal survey transmitter

The Inovonics EN1210SK survey transmitter is used with the EN7016 wireless survey kit to help determine the optimal location for transmitters and repeaters. Switch turns transmitter on/off to generate a “heartbeat” RF signal.



EE7016 Wireless survey kit

The EN7016 wireless survey kit is available for purchase or 30 day loan — you pay only the cost of shipping. Use the Inovonics EN7016 to determine optimal location for EchoStream transmitters and repeaters or to demonstrate the range of 900MHz EchoStream devices to potential customers.

- Survey any facility quickly and easily
- Completely portable
- Battery operates the system for up to eight hours
- Includes one EN1223SK survey pendant and one EN1210SK survey universal transmitter
- Requires four AA batteries, not included

Transmitters

Pendant

Part Number	Description
EE1223D	Double-button, water-resistant pendant transmitter
EE1223S	Single-button, water-resistant pendant transmitter
EE1233D	Double-button, pendant transmitter
EE1233S	Single-button, pendant transmitter
EE1235D	Double-button, belt clip pendant transmitter
EE1235S	Single-button, belt clip pendant transmitter
EE1236D	Double-button, three condition pendant transmitter
EE1235S	Single-button, belt clip pendant transmitter

Universal

Part Number	Description
EE1215	Single input universal transmitter with wall tamper
EE1215W	Single input universal transmitter with reed switch
EE1216	Dual input universal transmitter with wall tamper

Commercial Monitoring

Part Number	Description
EE1722	Temperature/humidity transmitter
EE1723	Dual input temperature transmitter

Specialized

Part Number	Description
EE1247	Glassbreak detector transmitter

Motion Detector

Part Number	Description
EE1261	Four element motion detector
EE1265	360° Ceiling mount motion detector

Receivers

Serial

Part Number	Description
EE4000	Universal serial receiver
EE4200-HSG	Security onlt receiver

Add-On

Part Number	Description
EE4216MR	16 zone multi-condition receiver with relay outputs
EE4232M	32 zone multi-condition receiver with open collector outputs
EE4232MR	32 zone multi-condition receiver with relay outputs

Repeaters

Repeater

Part Number	Description
EE5000	High power repeater

Other Infrastructure

System Tools

Part Number	Description
EE1210SK	Universal survey transmitter
EE7016	Wireless survey kit

Accessory Index

Part Number	Description
ACC501	Mounting Plate
ACC603M	Metal Chain Necklace
ACC603P	Plastic Chain Necklace
ACC605-BK10	Pendant Belt Clip Replacement, 10Pk
ACC623A	Accessory Pack for E*1223 Pendant
ACC623B	Accessory Pack Black for E*1223 Pendant
ACC623L	WRIST STRAP-LARGE
ACC623L-50	WRIST STRAP-LARGE-50 PACK
ACC623S	WRIST STRAP-SMALL
ACC623S-50	WRIST STRAP-SMALL- 50 Pack
ACC631	Continuous Alarm Trigger Module
ACC640	Outdoor Enclosure
ACC643	Serial/Power Cable
ACC650	Repeater Outdoor Housing Encloser
ACC665	Wall/Ceiling Mount Bracket
ACC667	Filter-White Light-E*1261
ACC668	Lens-Long Range-E*1261
ACC669	High Ceiling Lens for EN1265 PIR
ACC672CT	Curtain Lens-EN1260 PIR
ACC672LR	Long Range Lens-EN1260 PIR
ACC672PA	Pet Alley Lens-EN1260 PIR
ACC710	Temperature/Humidity Probe

Replacement Battery Index

Part Number
BAT604

Description
3.0V Lith Batt (Duracell)



Phone: 0845 009 2742
+1.303.939.9336
Fax: +1.303.939.8977
sales@inovonics.com
www.inovonics.com